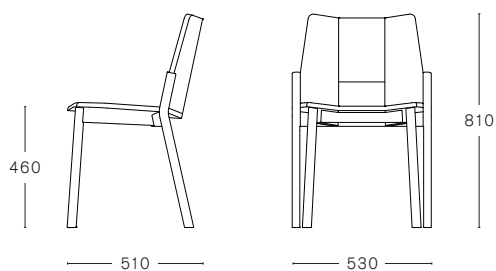


TRONCO CHAIR

design by **SAM HECHT / INDUSTRIAL FACILITY**



TECHNICAL INFORMATION

STACKABLE

STACKABLE ON DOLLY



x5



x10

MAX. PER BOX
2 CHAIRS

GROSS WEIGHT
CA. kg 16,00

VOLUME
0,32 m³

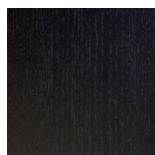
BOX SIZE
620 x 560 x 920 mm

FINISHINGS

ASH



NATURAL



BLACK



WHITE



WALNUT STAINED



CHESTNUT STAINED



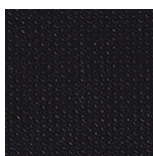
RED



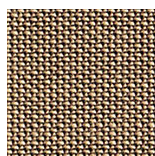
GREEN

FABRIC UPHOLSTERY

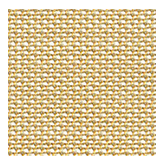
ROHI TOPIA



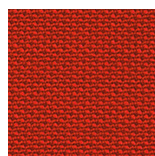
EBONY



WALNUT



MOON



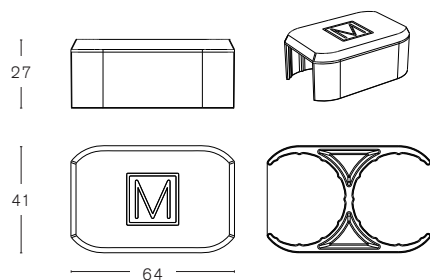
CHILI



PALM

TRONCO CONNECTOR

design by SAM HECHT / INDUSTRIAL FACILITY



TECHNICAL INFORMATION

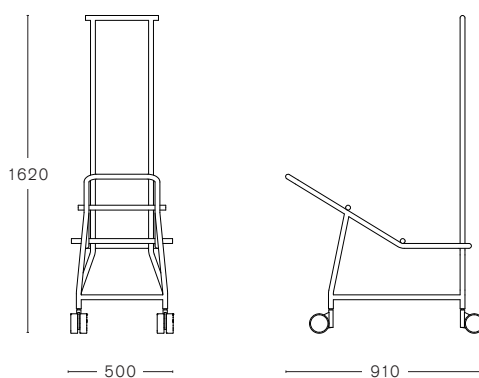
ROW CONNECTOR



PLASTIC PA6 + 30% GLASS FIBER

GROSS WEIGHT
CA. g 30

TRONCO DOLLY



TECHNICAL INFORMATION

MAX. PER BOX	GROSS WEIGHT	VOLUME	BOX SIZE
1 DOLLY	CA. kg 18,00	1,00 m ³	1000 × 600 × 1650 mm

FINISHINGS

MAT PLASTIC

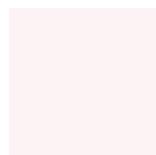


RED - RAL 3020



BLACK - RAL 8022

POWDER COATED METAL



WHITE



BLACK